



**Marysville, WA**

**GROUP RIDING CLASS**



# Prior to Leaving the House

- Everyone should have his or her endorsement (bike can be impounded) and H.O.G. cards (National & Local)
- Know your bike; take time to read the MOM (Motorcycle Operators Manual)
- T-CLOCS pre-ride checklist- Tires & Wheels, Controls, Lights & Electrics, Oil & other Fluids, Chassis, Sidestand. The MSF Checklist is available on our website
- Each rider is responsible for being well rested, having their motorcycle in proper working condition, a full tank of gas, an empty bladder and bringing riding attire appropriate for all types of weather
- Medical conditions need to be addressed, bring appropriate medications - Let Road Captain Know

## Ride to the Meet-up Point

- Stop and fill gas tank and tires.



# Arrive at the Meet-up Point

- Most rides leave from Sound H-D - Arrive 20 to 30 minutes prior to departure time
- Complete last minute preparations - bathroom break- anything needed from Sound
- Everyone must Sign In on the Event Sign In sheet
- Adult guests need to fill out a **Chapter Event Release Form - Adults**
- All Minors (under 18) must have a parent or legal guardian sign a **Chapter Event Release Form – Minors**
- Minors 12 and older must sign a **Minor's Assumption of Risk Acknowledgement**

## Pre-Ride Meeting

- The Lead Road Captain will gather the group together and go over the hand signals, route, stopping locations, drinking policy, and general information about the ride
- Identify the Road Captalns – Lead - Sweep - Additional RC's on the ride (Yellow Arm Bands)



# **Pre-Ride Meeting** continued

- Alcohol Policy is **ZERO** tolerance until the end of the ride, or end of the day, whichever comes first - End of the ride for offenders
- Special requests for break times and or distance let RC know
- Medical conditions - let RC know - Bee stings, diabetic, etc.
- Let the RC (Lead & Sweep) know if you plan on leaving the ride early. Ride in the back ahead of the sweep.
- Temperature at ride time must be 38-degree F or warmer.

## **Time and Distance**

- Generally one to one and a half hour per segment.
- Most all stops have restrooms and fuel (both the bike and you).
- Stretch your legs and remember the liquids, keep hydrated

# Staging

- We will line up in columns of 2 in the parking lot when we are ready to leave
- Positioning in group - Newer riders are encouraged to ride at the front of the group but may choose to ride anywhere they are comfortable
- Choose your Position in the lane - centerline or fog line
- Multiple groups may be formed if there are more than 16 bikes
- One finger here does not mean single file. It is **Bikers Ready**. When you are ready, put your Left Hand Up, Bike Running and in Neutral.



Bikers Ready





# Hand Signals

Be sure to be safe when giving hand signals – taking your hand off the clutch or throttle at slow speeds may be dangerous.



Bikers Ready



Left Turn



Right Turn



Slow Down



Stop



Speed Up



# Hand Signals



Railroad Crossing



Single File



Staggered



Hazard on Road



Hazard on Road



Hazard on Road



Hazard on Right  
Side



Pit Stop



Turn Signals



# The Ride

## Staggered Formation Riding

*This is the primary riding formation  
(see the image to the right).*

Single file is used when directed by the ride leader.

### ***One-second rule***

The bike in the lane to your left or right should be at least one second ahead of you.

### ***Two-second rule***

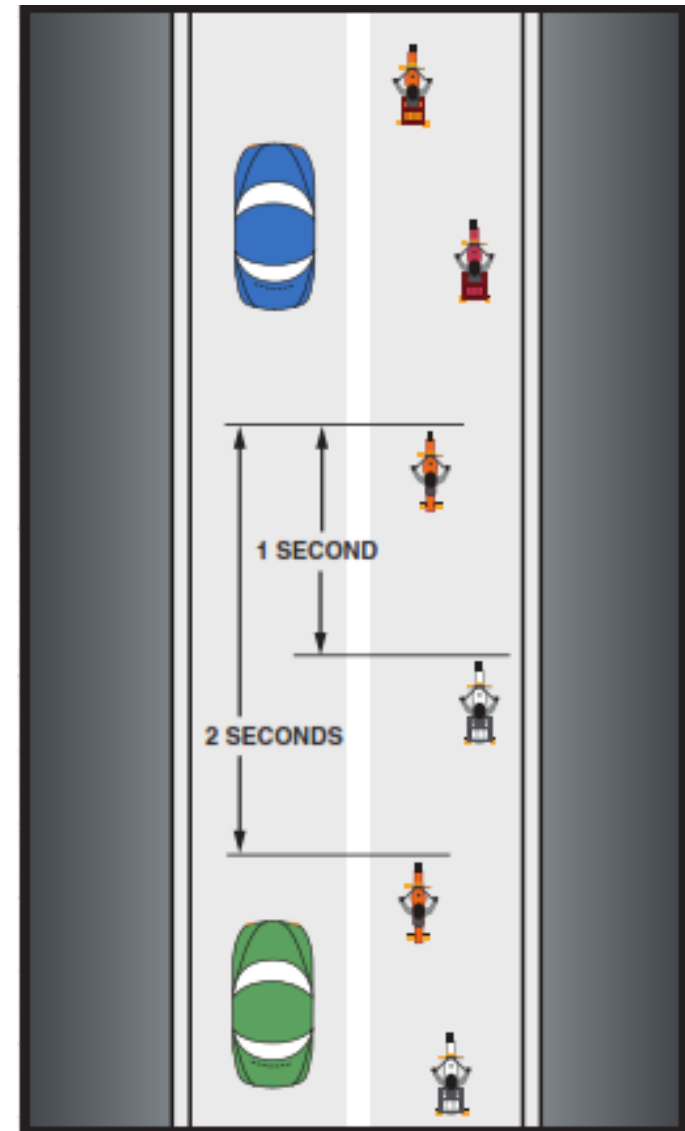
Maintain at least two seconds between you and the rider directly in front of you.

### ***Four-second rule***

Look ahead four seconds at your immediate path of Travel to give yourself more time to react to a hazard.

### ***Twelve-second rule***

Also look ahead at your anticipated path of travel.  
Twelve seconds is about one city block.

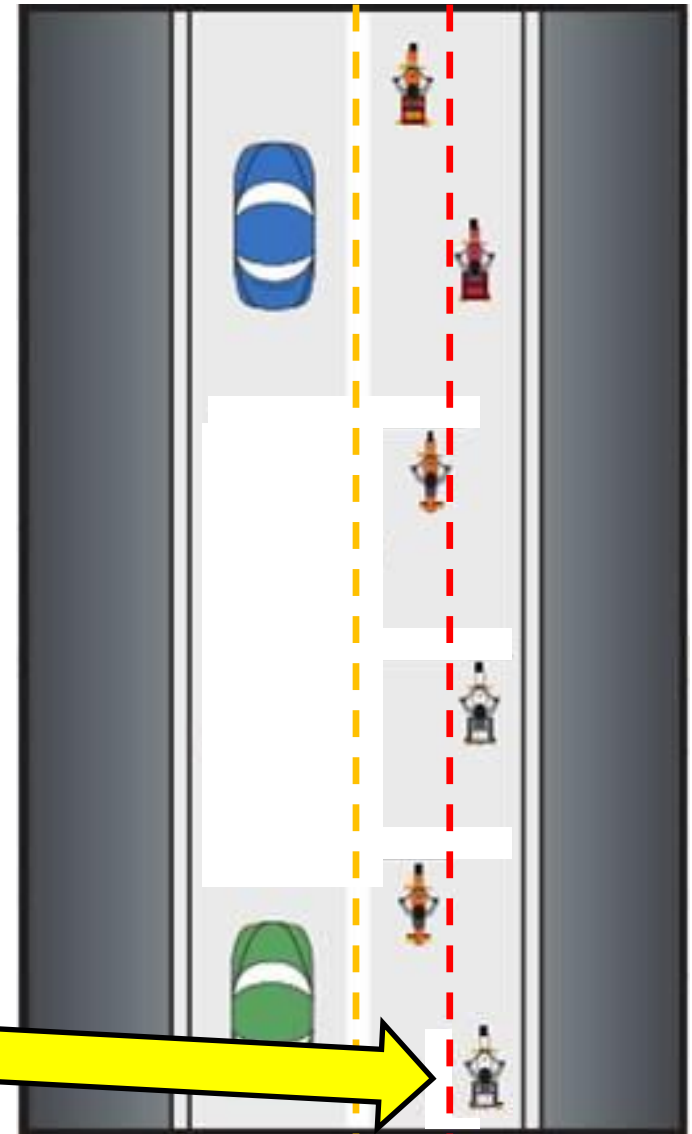






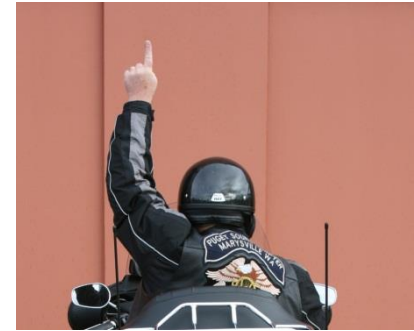
# The Ride

- Safety first – Adjust for Road Conditions and weather conditions
- Ride to your own abilities-Let RC know if pace too fast
- Staggered formation should be maintained except when instructed by Road Captain
- Do not cross tires - use mirrors on bike in front to judge distance
- Allow more following distance as road conditions require
- Consistent distance and smooth acceleration and deceleration reduce rubber band effect
- Maintain your lane position - the road is 12 feet wide.



# The Ride

- **One** up from lead RC - single file -- means you now have the whole lane to work with. Two seconds to the bike in front of you. Utilize the outside - inside - outside technique
  - At Roundabouts
  - When Passing Other Vehicles
  - If Curve Warning Sign <35 mph and Road Captain Discretion
  - At Road Captain Discretion
  - When Entering Parking Lots or Entering or Leaving Freeways
- Hand signals initiated by RC - Pass them all the way back, if riding two up, the passenger can do it for you -Turns, slow down, road hazards, single file, bicycles, and lane changes . Anyone can start a signal if a hazard is spotted
- The lead bike should not attempt to initiate passing unless he/she estimates that there will be sufficient room and time to allow the entire group to complete the pass safely.



Single File





# The Ride

## Changing Lanes or Passing

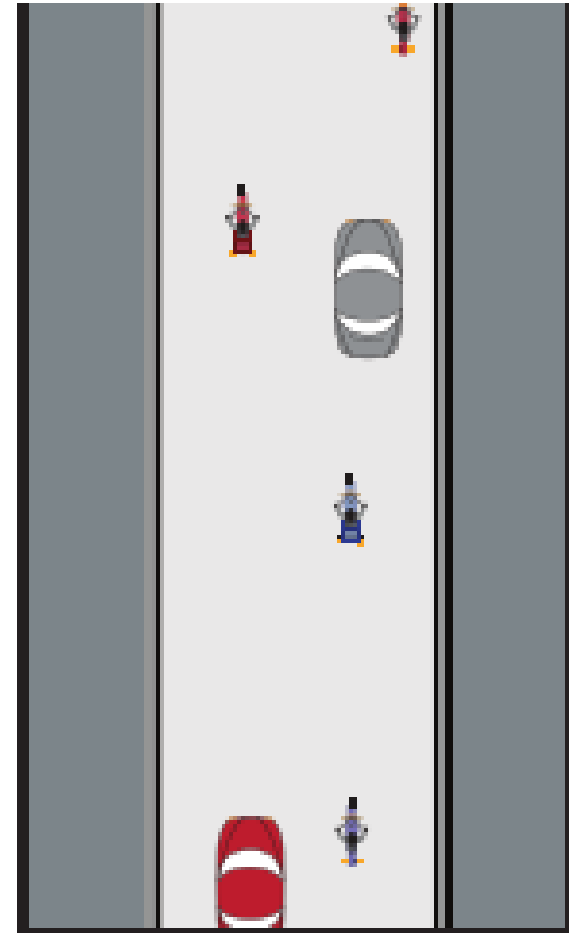
### *2-Lane Road*

It is usually very difficult for a group to pass a slow-moving car.

If the lead rider decides to pass the car, each rider must decide on his/her own if it is safe to follow.

Pass as if you were riding alone.

**IMPORTANT:** After passing the vehicle, move on ahead to make room for all the bikes that will come behind you.



# The Ride

## Changing Lanes or Passing

### 4-Lane Road

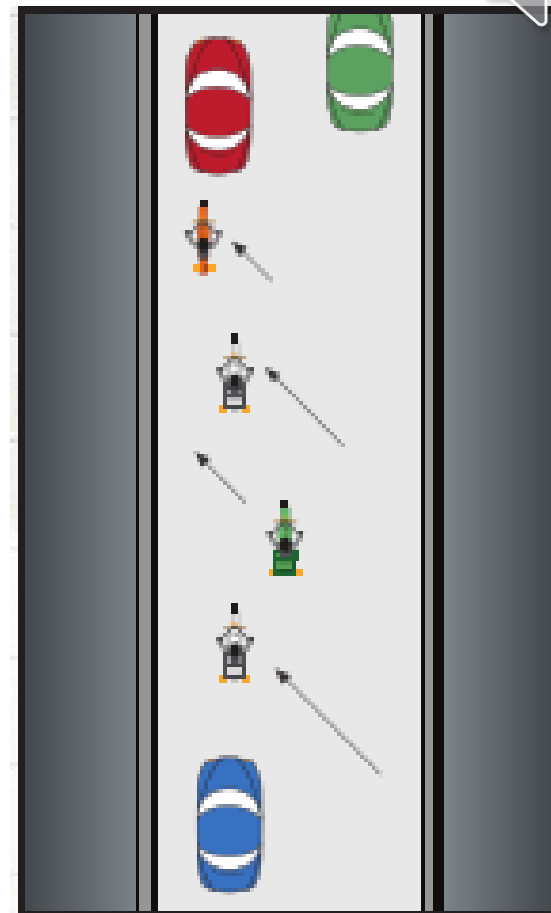
When your group wants to pass slower traffic or change lanes on a 4-lane road such as a freeway or interstate, ***the group may pass as a unit.*** When it is safe and legal, the lead rider should signal the lane change when he/she has determined that the entire group can change lanes and pass as a unit. The other riders then follow this lead and signal one at a time to move into the next lane. Your lead rider should maintain a merging speed that will allow enough space for following riders to safely merge. Since riding in a group doesn't change your right-of-way, be alert to the fact that ***cars entering or exiting the roadway may cut through your formation if your group is traveling in the far lane.*** It may be better to move the group over one lane when everyone has safely entered the roadway. In heavier traffic, resist the temptation to close up the formation too much.

### ***Maintain your space cushion.***

**NOTE:** Entering or exiting a 4-lane road such as a freeway or interstate always requires a single-file formation. This increases the space cushion and allows more reaction time. Change to staggered formation only after safely merging onto the roadway.

### OPTIONAL TECHNIQUE: Capturing The Lane

Same as above, except after the lead rider and all riders signal the lane change, the sweep will move over when safe to “capture the lane”. Lead rider and remaining riders move over one at a time, checking to ensure it is still safe.



# The Ride



## Stopping at an Intersection

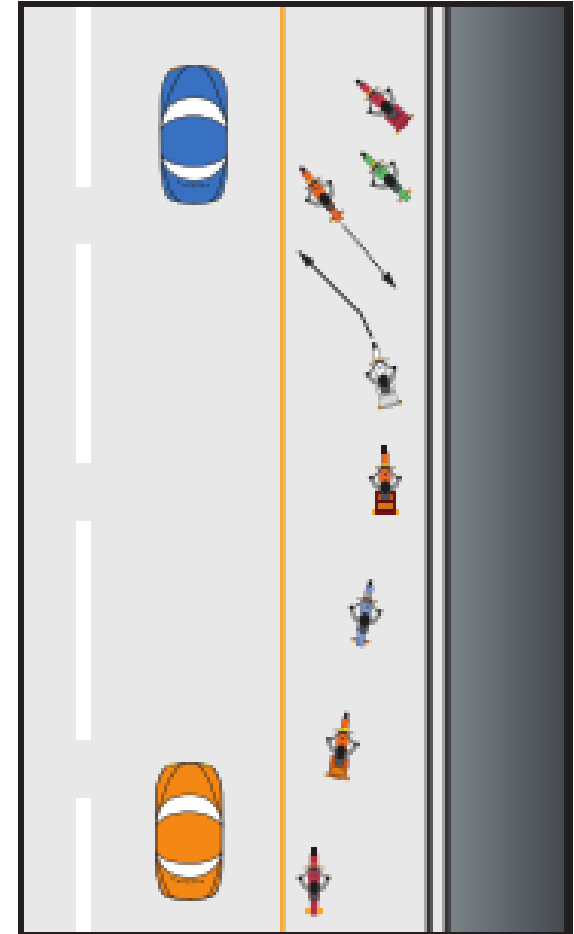
- Break staggered formation and pull up beside the bike in the adjacent lane.
- Come to a complete stop, and proceed only when safe to do so. You are responsible for your safety and obeying traffic rules.
- When the ride leader has determined it is safe, he/she will proceed, followed by the second bike, the third bike, the fourth bike, etc. Generally leave a stop 2 at a time. Do not overlap the person in front of you. Just because the person in front of you doesn't stop, it does not mean that it is safe or legal for you to go. Don't follow blindly.
- Some separation will occur, gently pull back into position-do not rush up.
- If you don't make it through the intersection with the group, RELAX. Proceed when safe.
- If you become separated from the group, stay on the designated route. We will always re-group as soon as possible, possibly the next scheduled rest stop.
- RC will try to judge lights and will wait for a large opening or light to change.





# Group Parking

- Orderly parking reduces the time needed to get off the road.
- The ride leader leads the group off the road in single file. He should ride all the way around the lot to allow all riders to get off the road. If fueling, the ride leader will pull all the way around, then pull up to the fuel station.
- Follow the ride leader to the selected parking area and establish your parking position.
- Each bike should pull ahead of the intended parking place and then back up into the spot.
- If you find yourself at the end of the group and can't get off the road while waiting for others to park, GO AROUND.







# Emergencies and Dropouts

- Signal intentions to the bike following.
- Proceed to the shoulder well out of the flow of traffic but stay within view of the road.
- Sweep will stop to assist.
- When Bikes leave the group - do not move up to fill the space until we come to the next complete stop.
- **To communicate an emergency to the lead, move close to the person in front of you and sound your horn twice. When hearing this signal, pass the signal forward to the lead.**
- Ride will continue to the next available safe area for all the bikes to pull over.
- Lead RC will assess the challenge and take necessary action.
- Most all RC's are CPR/First aid trained, carry first aid kits and have the CART list
- No rider will be left behind.



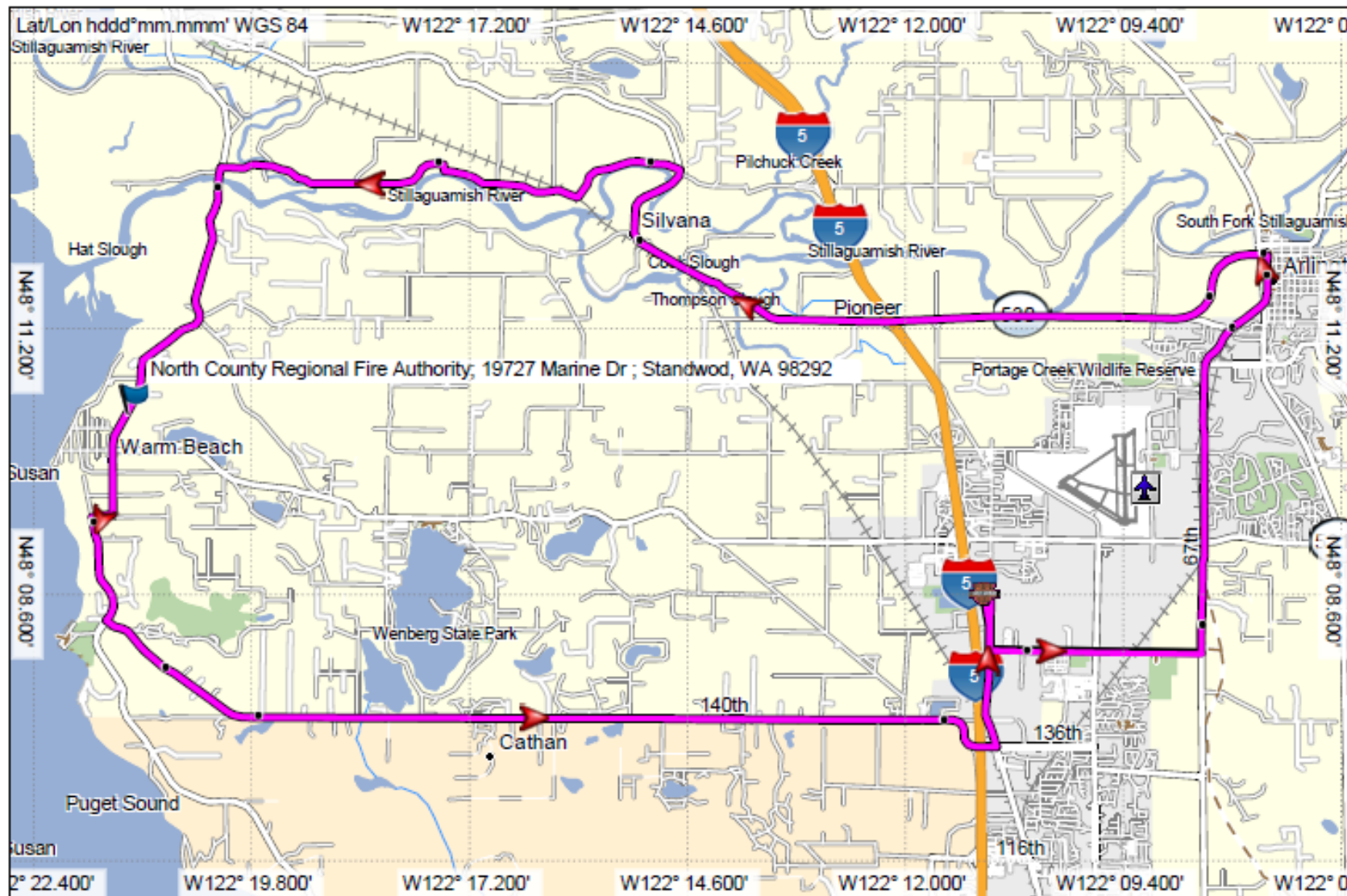
# Practice

- Practice riding in lane position, first one side and then the other.
- Practice taking corners at ten MPH above the suggested speed while maintaining lane position.
- Practice in parking lots, there are five skills to master, Maximum Braking, Swerving, Stopping in a Curve, Controlled Skids, and Obstacle Avoidance.
- Practice the SEE Technique



**S** – Search **E** – Evaluate **E** – Execute

- Train your peripheral vision
  - Pick a point and look at it
  - Notice how far you can see from side to side without moving your eyes/head.
  - Try to increase your awareness of what is happening at the edges of your vision.
- Practice Head Turns. Look through the turn to your final destination.



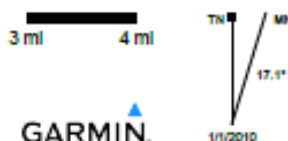
City Navigator North America NT 2019.1

Use of the Map Data is subject to certain restrictions and/or requirements imposed by third party suppliers and/or governmental or regulatory authorities as further set forth at [http://corporate.navteq.com/supplier\\_terms.html](http://corporate.navteq.com/supplier_terms.html).

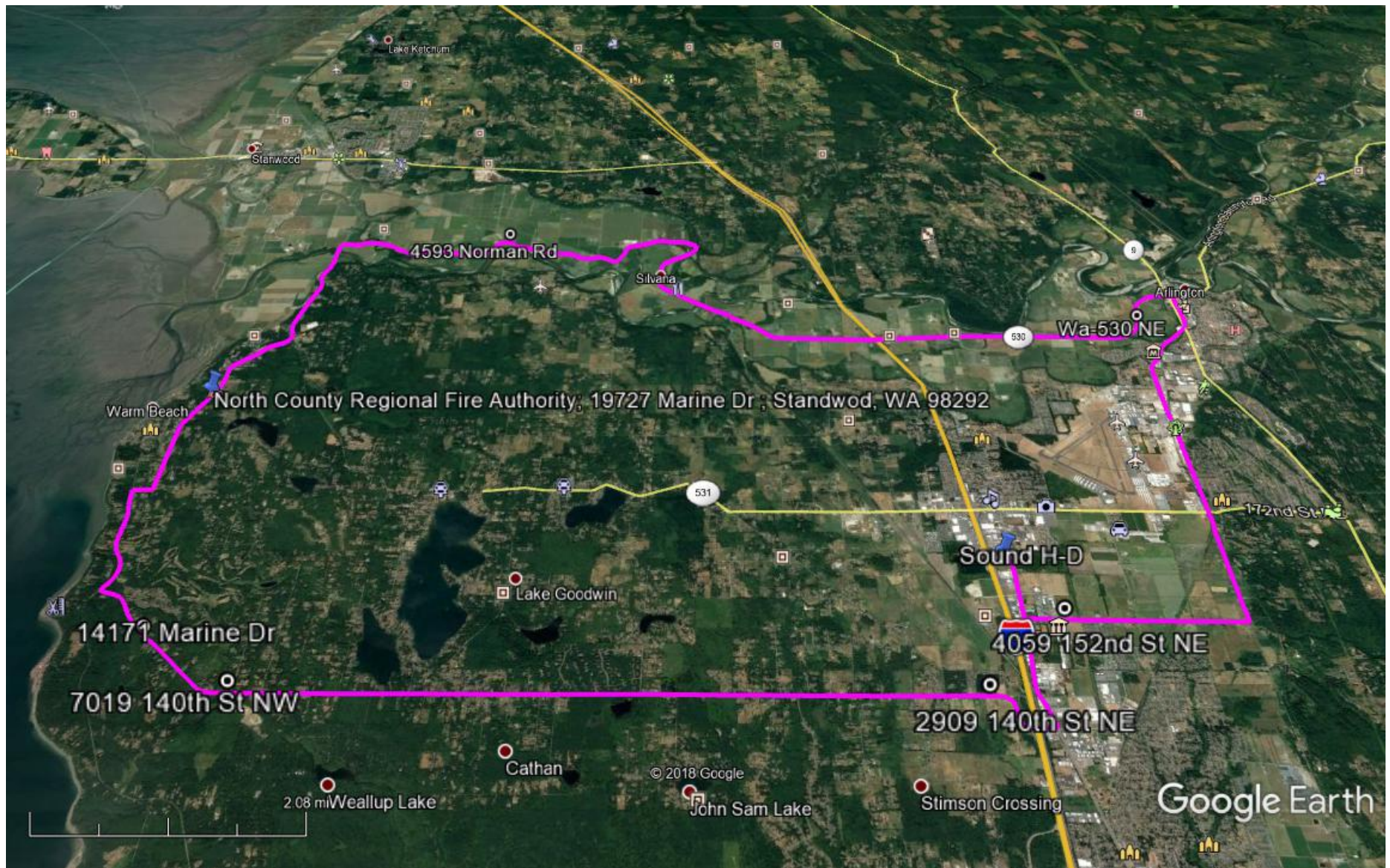
© 2017 HERE. All rights reserved.  
© Garmin Ltd. or its subsidiaries 2017.

Group ride class ride

0 mi 1 mi 2 mi 3 mi 4 mi







## Statistics

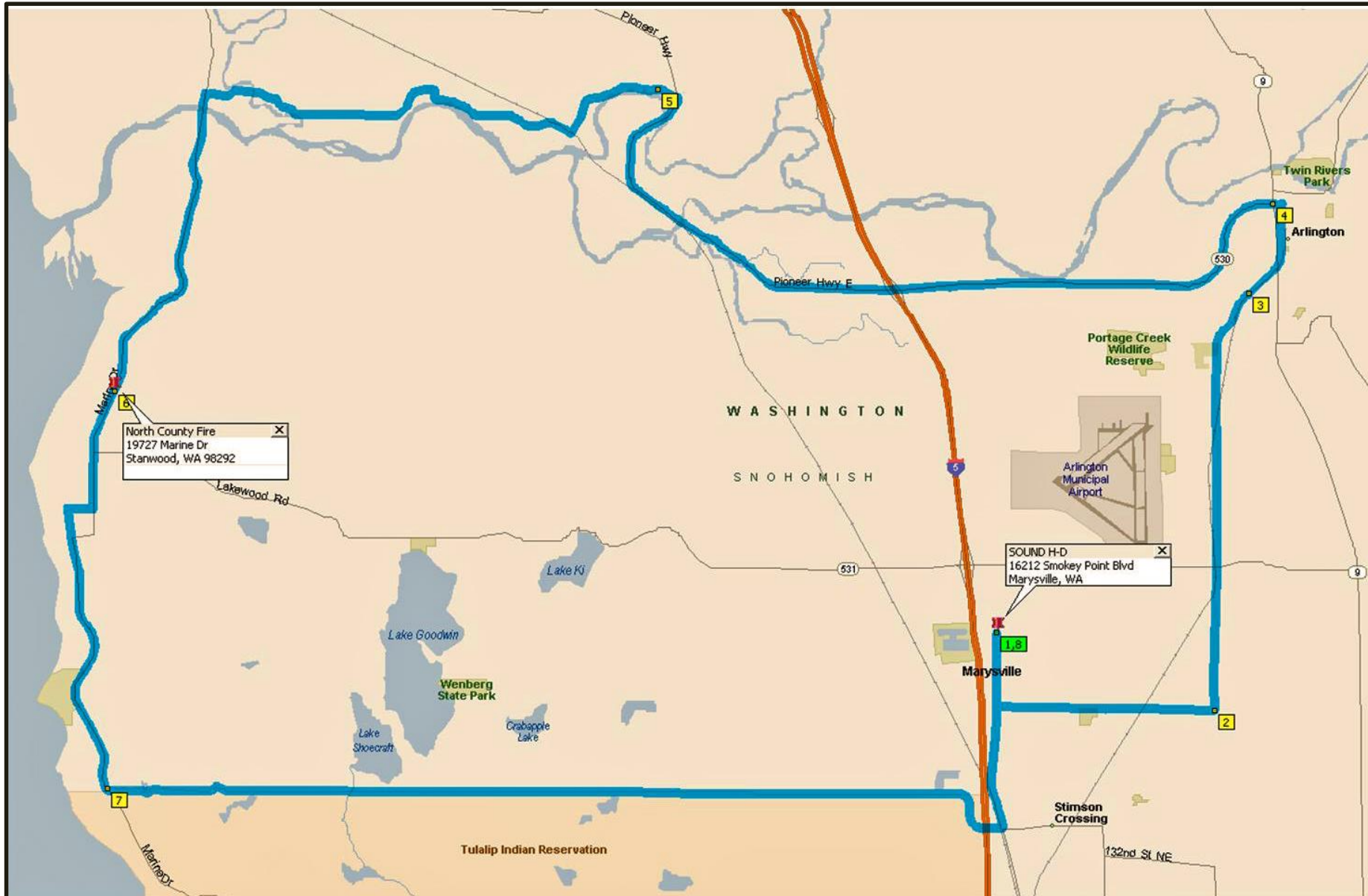
### Summary

Points: 44 Via Points: 18 Distance: 36.3 mi Total Time: 1 h, 29 min

	1. Sound H-D	
	2. Get on Smokey Point Blvd and ride south 306 ft	306 ft
	3. Turn left onto 152nd St NE 0.64 mi	1 min 0.7 mi
	4. Turn left onto 67th Ave NE 2.22 mi	3 min 2.9 mi
	5. Enter roundabout Roundabout 4.71 mi	1 min 7.6 mi
	6. Take the 3rd right onto W Division St 190 ft	16 s 7.7 mi
	7. Turn left onto Norman Rd 7.50 mi	2 min 15.2 mi
	8. Turn left onto Marine Dr 4.79 mi	4 min 20.0 mi
	9. North County Regional Fire Authority; 19727 Marine Dr ; Standwod, WA 98292 2.93 mi	5 min 22.9 mi
	10. Get on Marine Dr and ride southwest 17 ft	20 min 22.9 mi
	11. Turn right onto 176th St NW 1.36 mi	3 min 24.2 mi
	12. Turn left onto Marine Dr 1025 ft	1 min 24.4 mi
	13. Turn left onto Kayak Point Rd 1.26 mi	2 min 25.7 mi
	14. Turn left onto Smokey Point Blvd 8.84 mi	1 min 34.5 mi
	15. Sound H-D 1.80 mi	4 min 36.3 mi



# Group Riding Class Ride Map





# **Group Riding Class Turn by Turn Directions**

- 0.0 mi Depart 16212 Smokey Point Blvd, Marysville, WA 98271 on Smokey Point Blvd (South) for 0.6 mi
- 0.6 mi Turn LEFT (East) onto 152nd St NE for 1.9 mi
- 2.6 mi Turn LEFT (North) onto 67th Ave NE for 4.1 mi
- 6.7 mi Road name changes to (S) West Ave for 0.6 mi
- 7.3 mi At roundabout, take the THIRD exit onto W Division St for 174 yds
- 7.4 mi At SR-530, Arlington, WA 98223, keep STRAIGHT onto SR-530 [W Division St] for 3.9 mi
- 11.3 mi Road name changes to Pioneer Hwy (E) for 3.6 mi
- 14.8 mi Turn LEFT (West) onto Norman Rd for 4.8 mi
- 19.6 mi Turn LEFT (South) onto Marine Dr for 3.0 mi
- 22.5 mi Arrive North County Fire [19727 Marine Dr, Stanwood, WA 98292]
- 22.5 mi Depart North County Fire [19727 Marine Dr, Stanwood, WA 98292] on Marine Dr (South-West) for 1.1 mi
- 23.6 mi Turn RIGHT to stay on Marine Dr for 0.2 mi
- 23.8 mi Turn LEFT to stay on Marine Dr for 2.6 mi
- 26.5 mi At Kayak Point County Park, stay on Marine Dr (South-East) for 32 yds
- 26.5 mi Turn LEFT (East) onto 140th St (NW) for 7.6 mi
- 34.1 mi Keep RIGHT onto Fire Trail Rd for 0.4 mi
- 34.5 mi Road name changes to 136th St NE for 0.2 mi
- 34.7 mi Turn LEFT (North) onto Smokey Point Blvd for 1.8 mi
- 36.5 mi Arrive 16212 Smokey Point Blvd, Marysville, WA 98271